

Health

Long-term consequences include:



Memory loss



Movement disorders



Speech disability



Coma and death

Impacts in the brain:

Several studies show that the brain keeps developing until the age of 20 and that the alcohol consumption can alter the normal growing process, affecting its structure and brain functioning, which also may lead to problems of long life development in terms of cognition and concentration at school.

Researches link alcohol consumption to more than 60 diseases, such as cirrhosis of the liver, pancreatitis, cancer, cardiovascular problems, diabetes and immunological dysfunction.

What is alcohol

Law related to "Driving under the influence of alcohol" :

According to the Road Traffic Law of Macao, driving under the influence of 0.5 g of alcohol in their body for every litre of blood or above violates the law.

What is the reference for the 0.5 grams?



0.5 g is about the equivalent of drinking 1.5 cans of beer.



For driving under the influence of the alcohol, the maximum punishment can be sentenced to imprisonment and prohibition of driving.



What is alcohol



Alcohol can be found in beer, liqueur and it can make a person feel drunk. People have varying reaction to alcohol.

Our body needs at least 60 minutes to process at around 225ml of a drink with 5% of alcohol.



Alcohol, similarly to tobacco, can cause cancer, and has been classified as Group 1 carcinogen.



酒精的危害

Hazard of alcohol

戒毒諮詢
Hotline for Drug Treatment
2835 8844
禁毒諮詢
Anti-drug Enquiry Hotline
2878 1791



www.antidrugs.gov.mo

澳門特別行政區政府社會工作局
INSTITUTO DE ACÇÃO SOCIAL DO GOVERNO DA RAEM

www.ias.gov.mo

Health

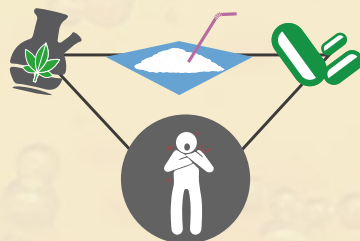


Social relations

To drug others: Why?

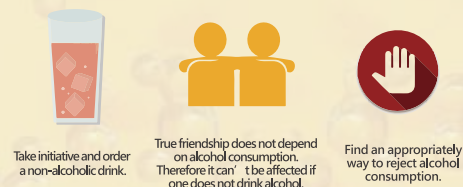


Mix of different drugs:
Can severely affect the health as it produces chemical effects.



Social relations

Best way to reject is to take action



Seek help



戒毒諮詢
Hotline for Drug Treatment
2835 8844

禁毒諮詢
Anti-drug Enquiry Hotline
2878 1791



www.antidrugs.gov.mo

 澳門特別行政區政府社會工作局
INSTITUTO DE ACÇÃO SOCIAL DO GOVERNO DA RAEM
www.ias.gov.mo